



Casing

Description	Length	Part#	Weight (Lb)
AW	1'	12-AWFJC-1	4
AW	2'	12-AWFJC-2	7
AW	3'	12-AWFJC-3	11
AW	5'	12-AWFJC-5	19
AW	10'	12-AWFJC-10	37
BW	1'	12-BWFJC-1	7
BW	2'	12-BWFJC-2	15
BW	3'	12-BWFJC-3	22
BW	5'	12-BWFJC-5	35
BW	10'	12-BWFJC-10	71
NW	1'	12-NWFJC-1	9
NW	2'	12-NWFJC-2	18
NW	3'	12-NWFJC-3	27
NW	5'	12-NWFJC-5	43
NW	10'	12-NWFJC-10	85
HW	1'	12-HWFJC-1	12
HW	2'	12-HWFJC-2	24
HW	3'	12-HWFJC-3	37
HW	5'	12-HWFJC-5	60
HW	10'	12-HWFJC-10	118
PW	1'	12-PWFJC-1	14
PW	2'	12-PWFJC-2	29
PW	3'	12-PWFJC-3	44
PW	5'	12-PWFJC-5	70
PW	10'	12-PWFJC-10	144
SW	1'	12-SWFJC-1	21
SW	2'	12-SWFJC-2	42
SW	3'	12-SWFJC-3	63
SW	5'	12-SWFJC-5	100
SW	10'	12-SWFJC-10	201

*\* Also available with L.H. threading.*

*\* Also available in 1026.*

*\* Please consult factory for special requirements.*



# W FLUSH JOINT CASING (METRIC)

N&N Drilling Supply Mfr. • (800) 334-4927



Casing

Description	Length	Part#	Weight (Lb)
AW	0.75M	12-AWFJC-0.75M	7
AW	1.50M	12-AWFJC-1.50M	18
AW	3.00M	12-AWFJC-3.00M	36
BW	0.75M	12-BWFJC-0.75M	14
BW	1.50M	12-BWFJC-1.50M	34
BW	3.00M	12-BWFJC-3.00M	70
NW	0.75M	12-NWFJC-0.75M	17
NW	1.50M	12-NWFJC-1.50M	42
NW	3.00M	12-NWFJC-3.00M	85
HW	0.75M	12-HWFJC-0.75M	23
HW	1.50M	12-HWFJC-1.50M	58
HW	3.00M	12-HWFJC-3.00M	117
PW	0.75M	12-PWFJC-0.75M	28
PW	1.50M	12-PWFJC-1.50M	69
PW	3.00M	12-PWFJC-3.00M	142
SW	0.75M	12-SWFJC-0.75M	41
SW	1.50M	12-SWFJC-1.50M	99
SW	3.00M	12-SWFJC-3.00M	200

\* Also available with L.H. threading.

\* Also available in 1026.

\* Please consult factory for special requirements.



Casing

Description	Length	Part#	Weight (Lb)
BWT	1'	12-BWTFJC-1	7
BWT	2'	12-BWTFJC-2	15
BWT	3'	12-BWTFJC-3	22
BWT	5'	12-BWTFJC-5	36
BWT	10'	12-BWTFJC-10	71
NWT	1'	12-NWTFJC-1	9
NWT	2'	12-NWTFJC-2	18
NWT	3'	12-NWTFJC-3	27
NWT	5'	12-NWTFJC-5	43
NWT	10'	12-NWTFJC-10	85
HWT	1'	12-HWTFJC-1	12
HWT	2'	12-HWTFJC-2	24
HWT	3'	12-HWTFJC-3	37
HWT	5'	12-HWTFJC-5	60
HWT	10'	12-HWTFJC-10	118
PWT	1'	12-PWTFJC-1	16
PWT	2'	12-PWTFJC-2	33
PWT	3'	12-PWTFJC-3	49
PWT	5'	12-PWTFJC-5	81
PWT	10'	12-PWTFJC-10	144
SWT	1'	12-SWTFJC-1	21
SWT	2'	12-SWTFJC-2	42
SWT	3'	12-SWTFJC-3	63
SWT	5'	12-SWTFJC-5	100
SWT	10'	12-SWTFJC-10	201

*\* Also available with L.H. threading.*

*\* Also available in 1026.*

*\* Please consult factory for special requirements.*



# WT FLUSH JOINT CASING (METRIC)

N&N Drilling Supply Mfr. • (800) 334-4927



Casing

Description	Length	Part#	Weight (Lb)
BWT	0.75M	12-BWTFJC-0.75M	14
BWT	1.50M	12-BWTFJC-1.50M	35
BWT	3.00M	12-BWTFJC-3.00M	70
NWT	0.75M	12-NWTFJC-0.75M	17
NWT	1.50M	12-NWTFJC-1.50M	42
NWT	3.00M	12-NWTFJC-3.00M	84
HWT	0.75M	12-HWTFJC-0.75M	23
HWT	1.50M	12-HWTFJC-1.50M	59
HWT	3.00M	12-HWTFJC-3.00M	117
PWT	0.75M	12-PWTFJC-0.75M	32
PWT	1.50M	12-PWTFJC-1.50M	80
PWT	3.00M	12-PWTFJC-3.00M	142
SWT	0.75M	12-SWTFJC-0.75M	41
SWT	1.50M	12-SWTFJC-1.50M	99
SWT	3.00M	12-SWTFJC-3.00M	200

*\* Also available with L.H. threading.*

*\* Also available in 1026.*

*\* Please consult factory for special requirements.*



**Drive Shoe**

**HEAT TREATED DRIVE SHOES**

<b>Description</b>	<b>Part#</b>	<b>Weight (Lb)</b>
AW	16-AWDS	2
BW	16-BWDS	3
BWT	16-BWTDS	3
NW	16-NWDS	4
NWT	16-NWTDS	4
HW	16-HWDS	7
HWT	16-HWTDS	7
PW	16-PWDS	15
PWT	16-PWTDS	15
SW	16-SWDS	20
SWT	16-SWTDS	20

*\* Also available with L.H. threading.*

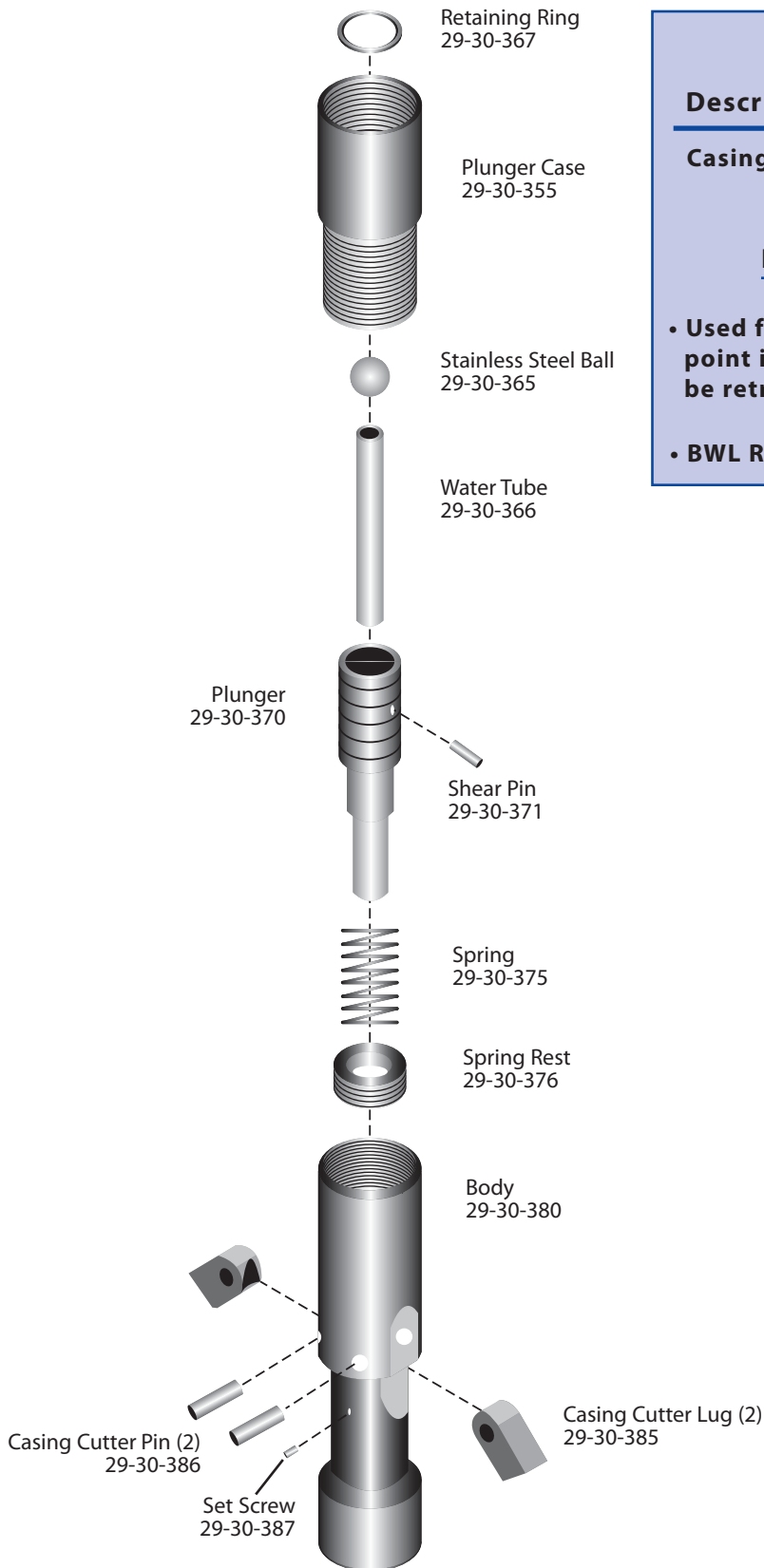


**Steel Casing Cap**

**STEEL CASING CAPS**

<b>Description</b>	<b>Part#</b>	<b>Weight (Lb)</b>
AW	16-AWCP	3
BW	16-BWCP	5
BWT	16-BWTCP	5
NW	16-NWCP	6
NWT	16-NWTCP	6
HW	16-HWCP	8
HWT	16-HWTCP	8
PW	16-PWCP	10
PWT	16-PWTCP	10
SW	16-SWCP	15
SWT	16-SWTCP	15

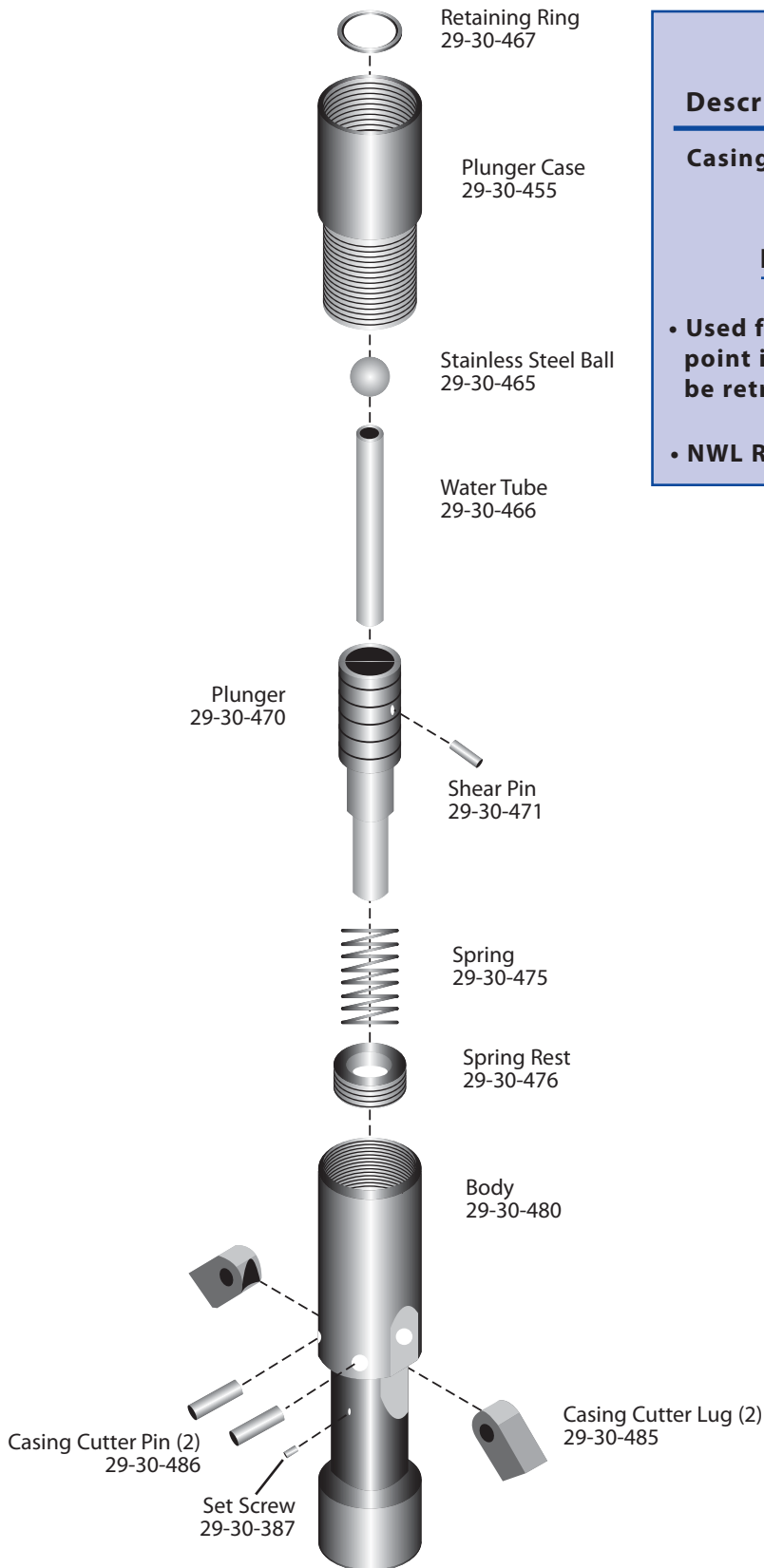
*\* Also available with L.H. threading.*



<u>ASSEMBLY</u>		
<u>Description</u>	<u>Part#</u>	<u>Weight (Lb)</u>
Casing Cutter Assy	29-30-350	17

**BW CASING CUTTER APPLICATIONS**

- Used for cutting BW Casing or NWL Rod at any point in a drill hole when the entire string cannot be retrieved.
- BWL Rod Box Connection



<u>ASSEMBLY</u>		
<u>Description</u>	<u>Part#</u>	<u>Weight (Lb)</u>
Casing Cutter Assy	29-30-450	25

**NW CASING CUTTER APPLICATIONS**

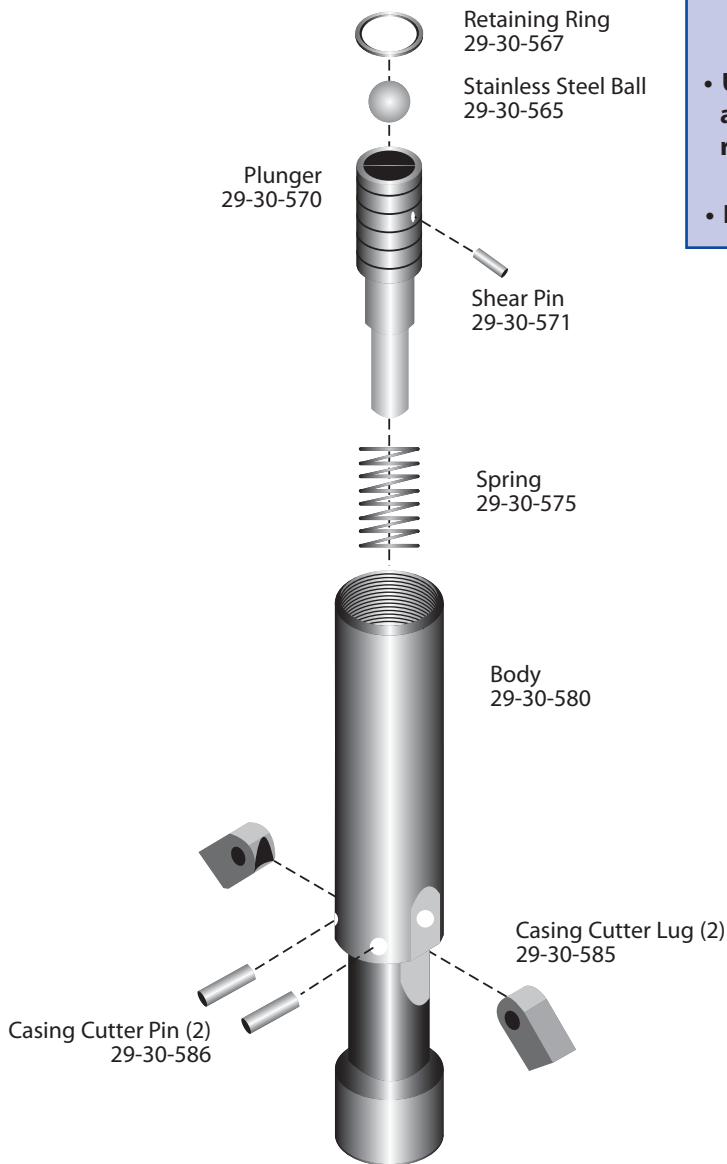
- Used for cutting NW Casing or HWL Rod at any point in a drill hole when the entire string cannot be retrieved.
- NWL Rod Box Connection



<u>ASSEMBLY</u>		
<u>Description</u>	<u>Part#</u>	<u>Weight (Lb)</u>
Casing Cutter Assy	29-30-550	38

**HW CASING CUTTER APPLICATIONS**

- Used for cutting HW / HWT Casing at any point in a drill hole when the entire string cannot be retrieved.
- HWL Rod Box Connection



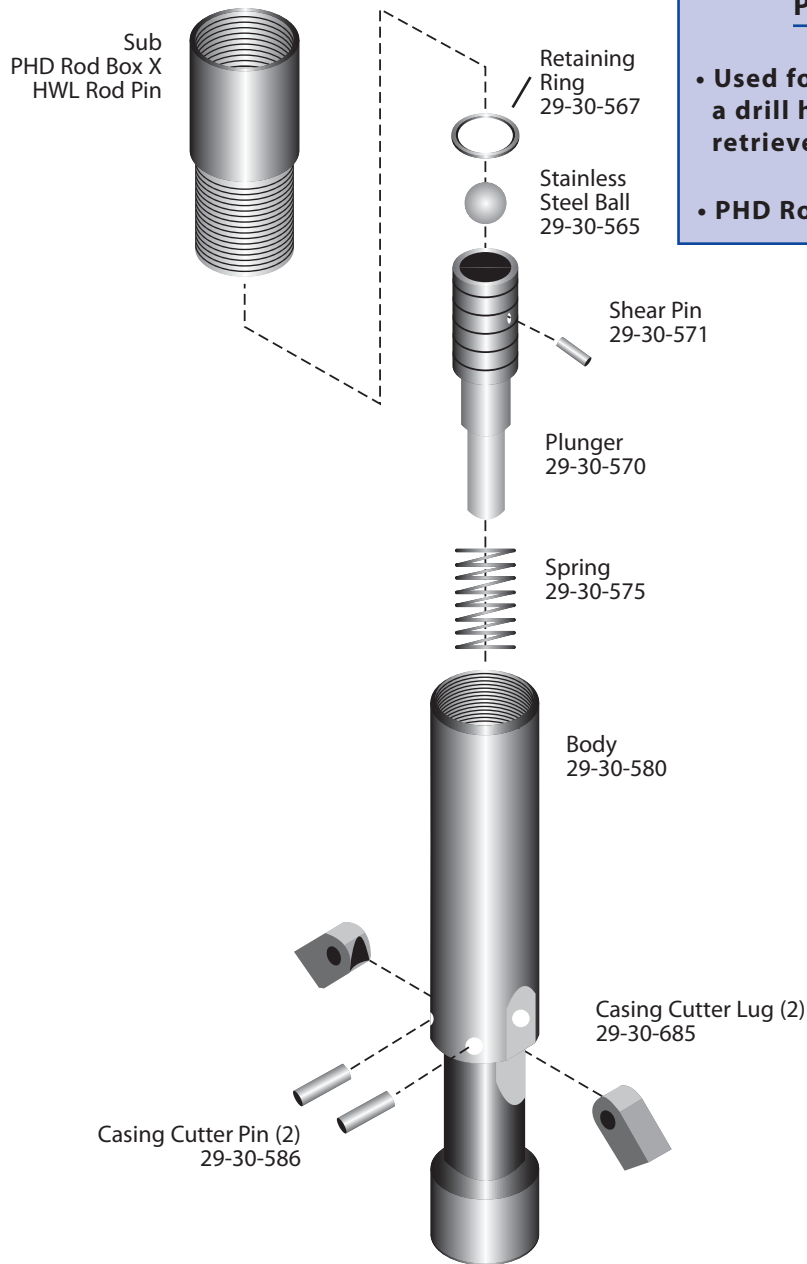




<u>ASSEMBLY</u>		
<u>Description</u>	<u>Part#</u>	<u>Weight (Lb)</u>
Casing Cutter Assy	29-30-650	41

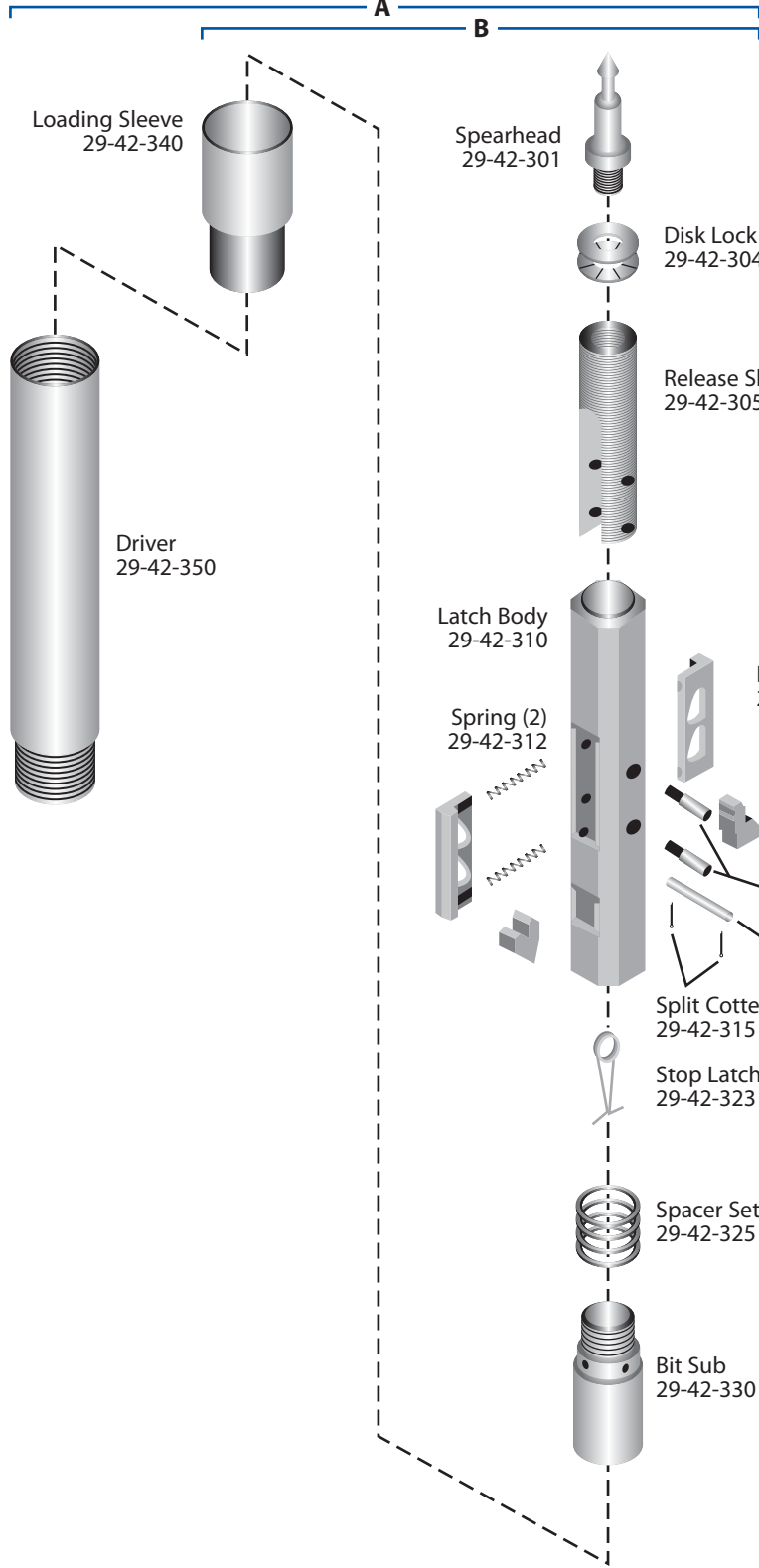
**PW CASING CUTTER APPLICATIONS**

- Used for cutting PW / PWT Casing at any point in a drill hole when the entire string cannot be retrieved.
- PHD Rod Box Connection





Assemblies

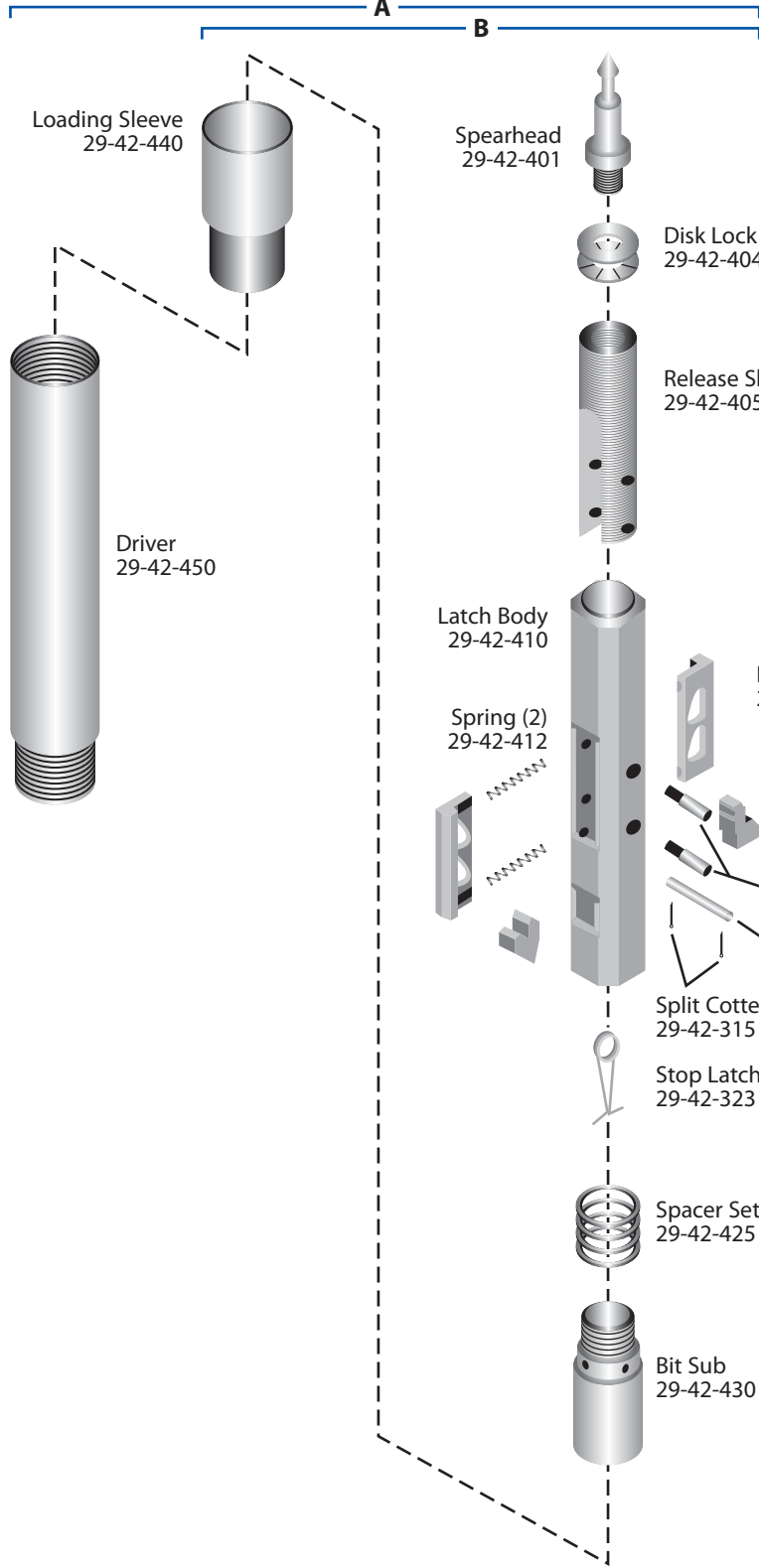


ASSEMBLIES		
Group	Description	Part#
A	Casing Advancer Assy	29-40-305
B	Inner Assy	29-41-305

\* Please consult factory for special requirements.



Assemblies

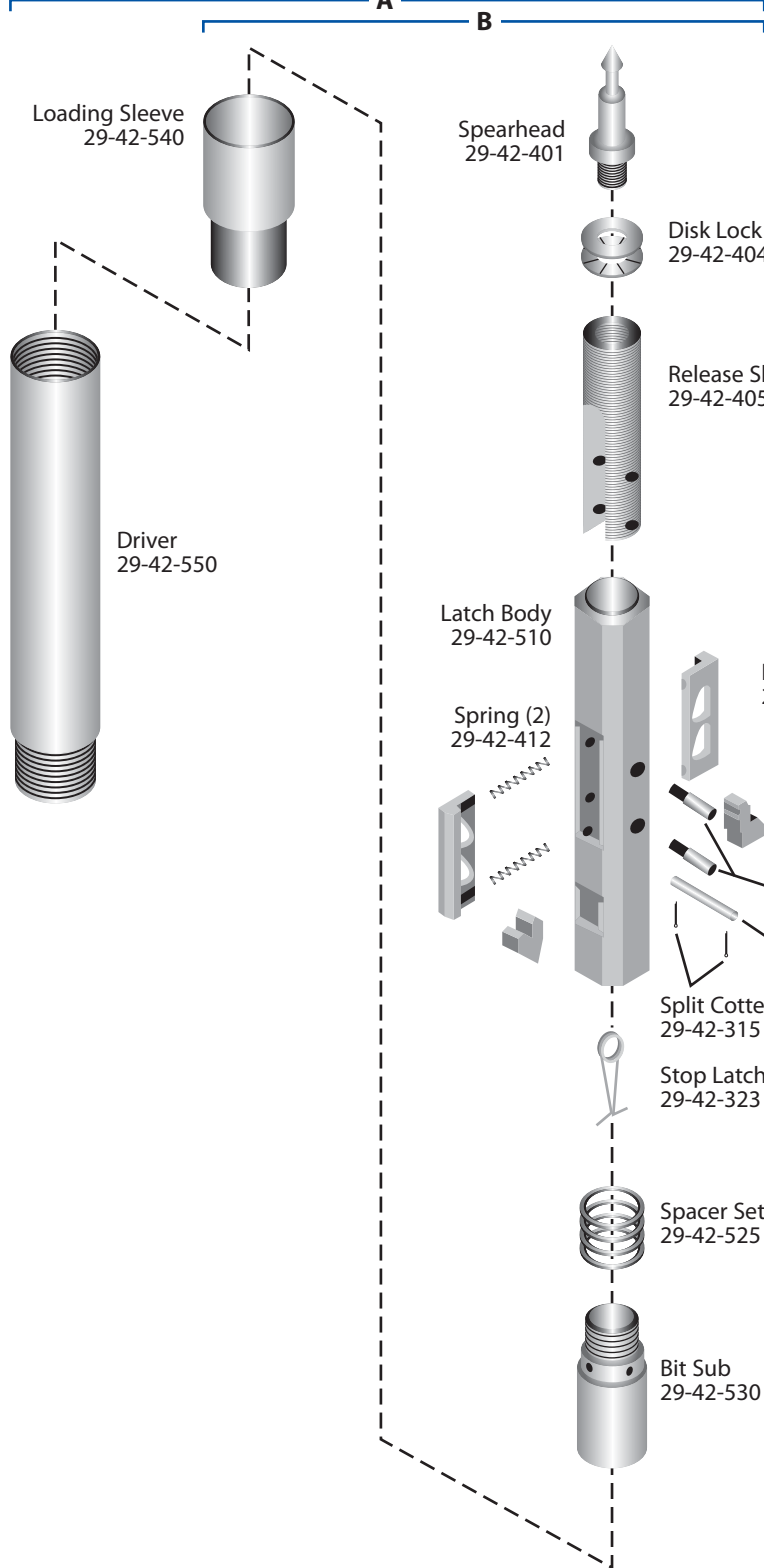


ASSEMBLIES		
Group	Description	Part#
A	Casing Advancer Assy	29-40-405
B	Inner Assy	29-41-405

\* Please consult factory for special requirements.



Assemblies

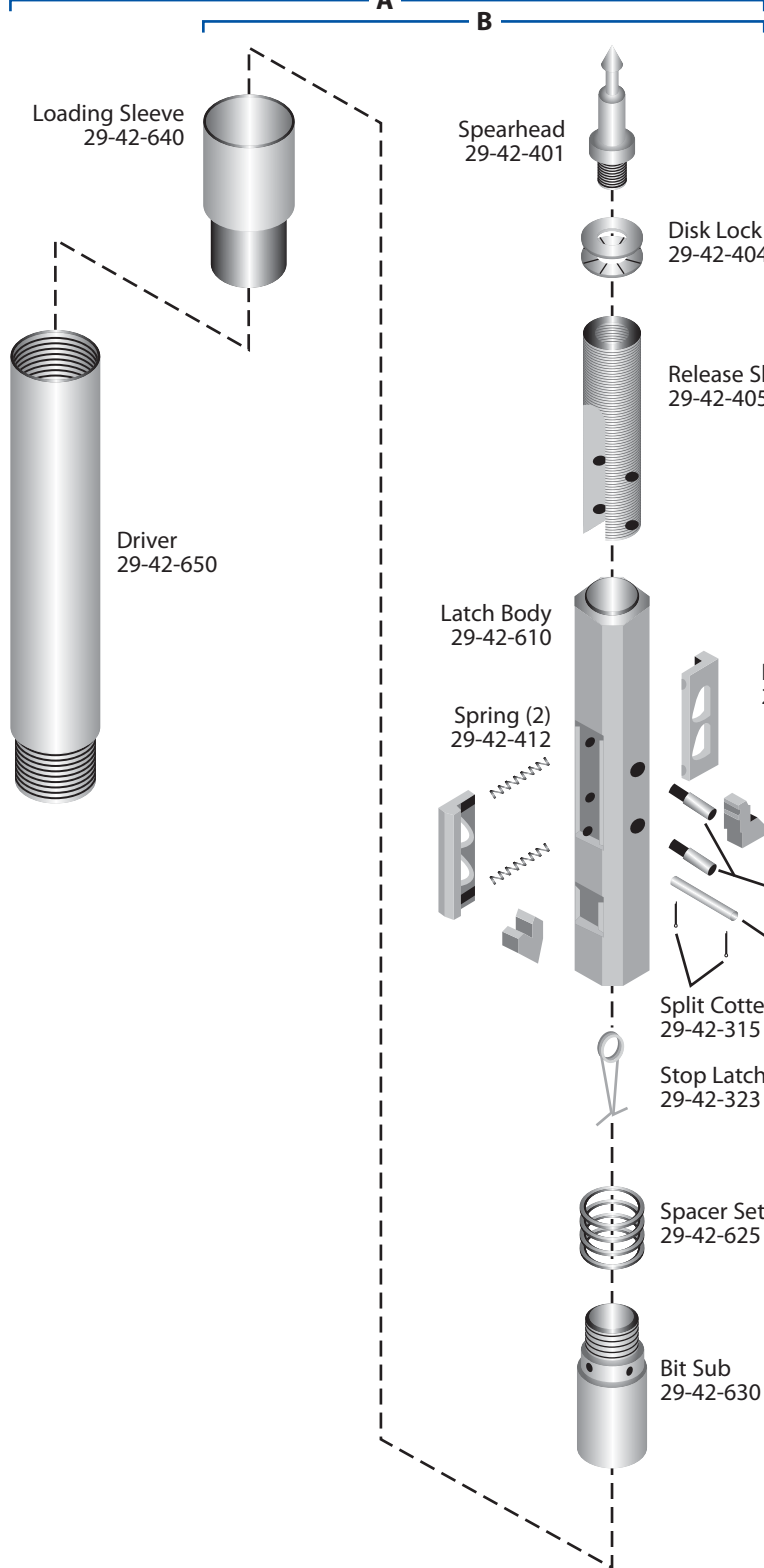


ASSEMBLIES		
Group	Description	Part#
A	Casing Advancer Assy	29-40-505
B	Inner Assy	29-41-505

\* Please consult factory for special requirements.



Assemblies

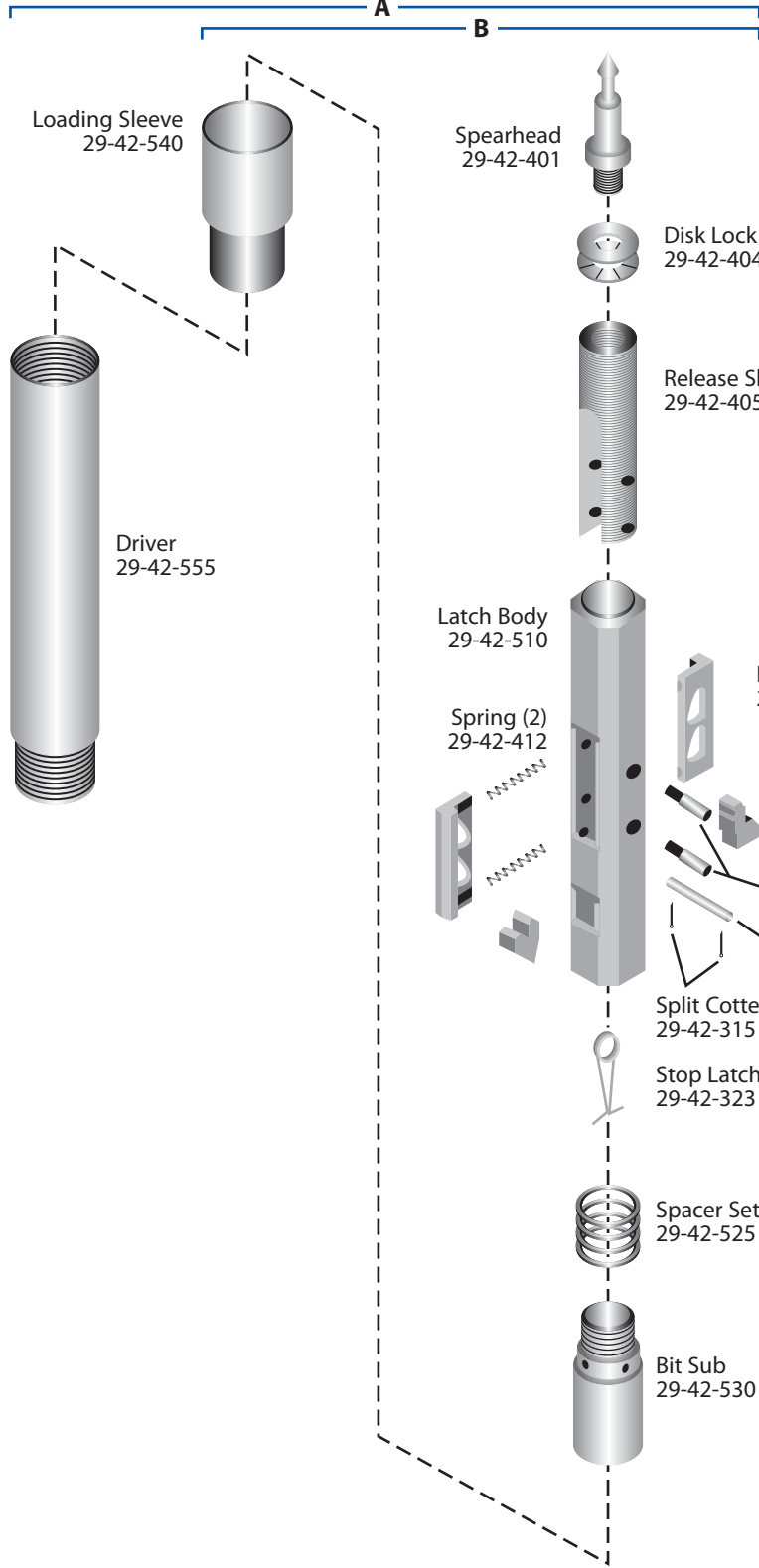


ASSEMBLIES		
Group	Description	Part#
A	Casing Advancer Assy	29-40-605
B	Inner Assy	29-41-605

\* Please consult factory for special requirements.



Assemblies



ASSEMBLIES		
Group	Description	Part#
A	Casing Advancer Assy	29-40-510
B	Inner Assy	29-41-505

\* Please consult factory for special requirements.

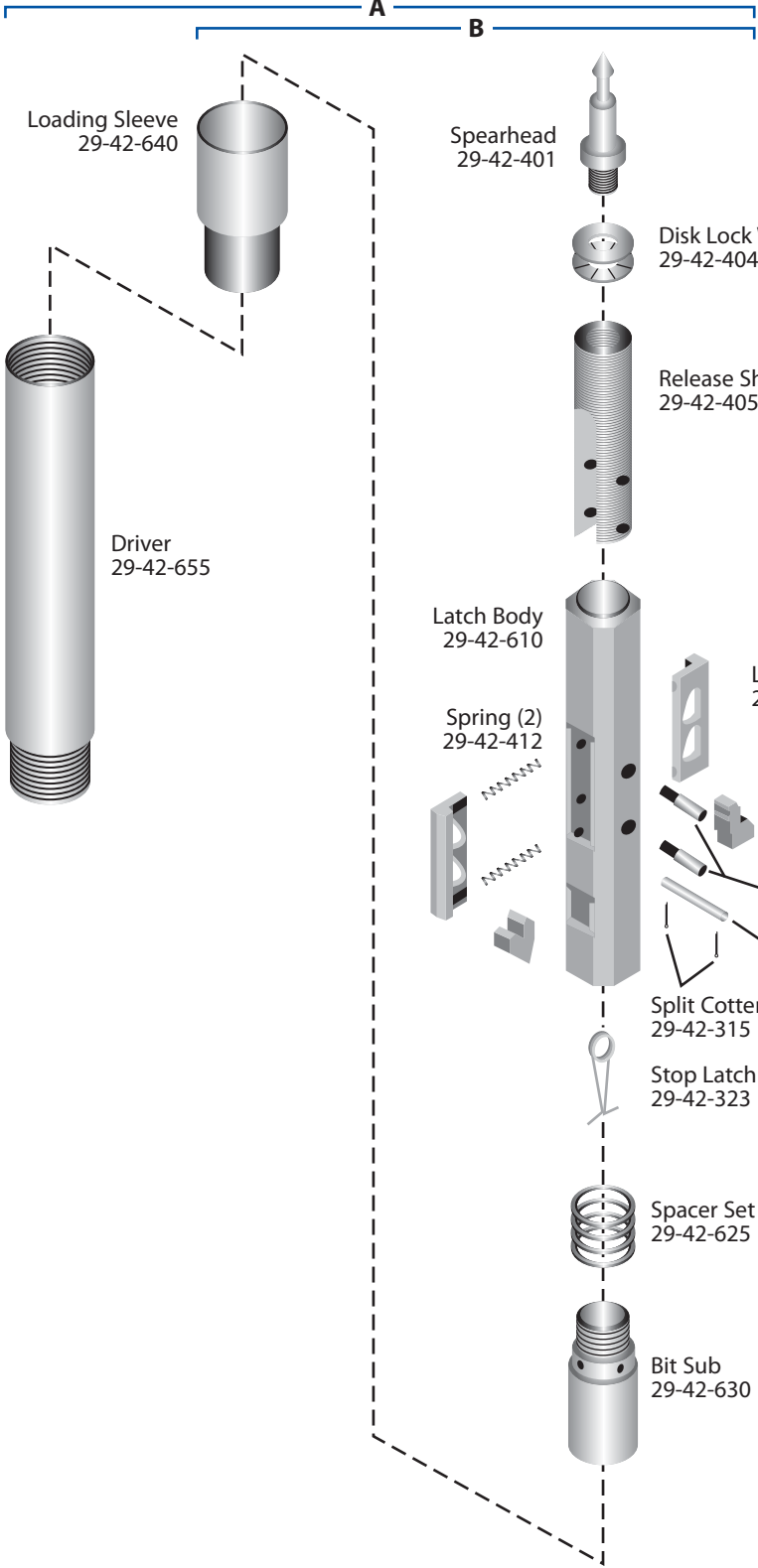


N&N Drilling Supply Mfr. • (800) 334-4927

ASSEMBLIES		
Group	Description	Part#
A	Casing Advancer Assy	29-40-610
B	Inner Assy	29-41-605

\* Please consult factory for special requirements.

Assemblies



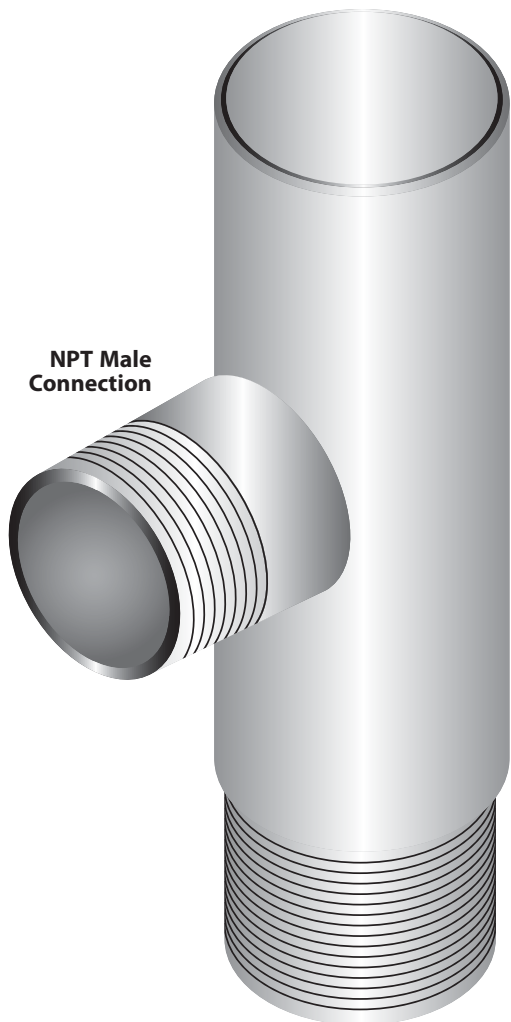


**CASING WASH TEES**

<b>Description</b>	<b>Part#</b>	<b>Weight (Lb)</b>
AW	18-AW-WSHT	6.1
BW	18-BW-WSHT	11.8
BWT	18-BWT-WSHT	11.8
NW	18-NW-WSHT	14.0
NWT	18-NWT-WSHT	14.0
HW	18-HW-WSHT	19.1
HWT	18-HWT-WSHT	19.1
PW	18-PW-WSHT	23.0
PWT	18-PWT-WSHT </td <td>23.0</td>	23.0
SW	18-SW-WSHT	31.6
SWT	18-SWT-WSHT	31.6

*\* Also available with L.H. threading.*

*\* Please consult factory for special requirements.*



**NPT Male Connection**

**WIRELINE WASH TEES**

<b>Description</b>	<b>Part#</b>	<b>Weight (Lb)</b>
AWL	18-AWL-WSHT	6.1
BWL	18-BWL-WSHT	7.5
NWL	18-NWL-WSHT	9.2
HWL	18-HWL-WSHT	13.0
PHD	18-PHD-WSHT	19.2
ATW	18-ATW-WSHT	5.1
BTW	18-BTW-WSHT	6.5
NTW	18-NTW-WSHT	8.9
HTW	18-HTW-WSHT	12.6

*\* Also available with L.H. threading.*

*\* Please consult factory for special requirements.*





Cap Screw &  
Lock Washer



Cap

Jaw (2)

Body

### ASSEMBLIES

Casing	Description	Part#	Weight (Lb)
NW	Retriever Assy	41-10-460	23.0
HW	Retriever Assy	41-10-560	33.0
PW	Retriever Assy	41-10-660	38.0

### REPLACEMENT JAWS

NW	Set of Jaws	41-10-465	2.0
HW	Set of Jaws	41-10-565	3.5
PW	Set of Jaws	41-10-665	4.5

*\* Please consult factory for special requirements.*



**N&N Drilling Supply Mfr. • (800) 334-4927**

<b>W FLUSH JOINT CASING</b>							
<b>Size</b>	<b>O.D.</b>		<b>I.D.</b>		<b>Threads Per Inch</b>	<b>Weight</b>	
	<b>Inches</b>	<b>MM</b>	<b>Inches</b>	<b>MM</b>		<b>Lb / 10 Ft</b>	<b>Kg / 3 M</b>
<b>AW</b>	<b>2.2500</b>	<b>57.1</b>	<b>1.9060</b>	<b>48.4</b>	<b>4.0</b>	<b>37</b>	<b>17</b>
<b>BW</b>	<b>2.7500</b>	<b>69.9</b>	<b>2.3750</b>	<b>60.3</b>	<b>4.0</b>	<b>71</b>	<b>32</b>
<b>NW</b>	<b>3.5000</b>	<b>88.9</b>	<b>3.0000</b>	<b>76.2</b>	<b>4.0</b>	<b>85</b>	<b>39</b>
<b>HW</b>	<b>4.5000</b>	<b>114.3</b>	<b>4.0000</b>	<b>101.6</b>	<b>4.0</b>	<b>118</b>	<b>53</b>
<b>PW</b>	<b>5.5000</b>	<b>139.7</b>	<b>5.0000</b>	<b>127.0</b>	<b>3.0</b>	<b>144</b>	<b>72</b>
<b>SW</b>	<b>6.6250</b>	<b>168.2</b>	<b>6.0000</b>	<b>152.4</b>	<b>3.0</b>	<b>201</b>	<b>90</b>
<b>UW</b>	<b>7.6250</b>	<b>193.6</b>	<b>7.0000</b>	<b>177.8</b>	<b>2.0</b>	<b>242</b>	<b>109</b>
<b>ZW</b>	<b>8.6250</b>	<b>219.1</b>	<b>8.0000</b>	<b>203.2</b>	<b>2.0</b>	<b>275</b>	<b>124</b>

*\* Material: 4130 / 1026*

<b>WT FLUSH JOINT CASING</b>							
<b>Size</b>	<b>O.D.</b>		<b>I.D.</b>		<b>Threads Per Inch</b>	<b>Weight</b>	
	<b>Inches</b>	<b>MM</b>	<b>Inches</b>	<b>MM</b>		<b>Lb / 10 Ft</b>	<b>Kg / 3 M</b>
<b>BWT</b>	<b>2.7500</b>	<b>69.9</b>	<b>2.3750</b>	<b>60.3</b>	<b>2.5</b>	<b>71</b>	<b>32</b>
<b>NWT</b>	<b>3.5000</b>	<b>88.9</b>	<b>3.0000</b>	<b>76.2</b>	<b>2.5</b>	<b>85</b>	<b>39</b>
<b>HWT</b>	<b>4.5000</b>	<b>114.3</b>	<b>4.0000</b>	<b>101.6</b>	<b>2.5</b>	<b>118</b>	<b>53</b>
<b>PWT</b>	<b>5.5000</b>	<b>139.7</b>	<b>5.0000</b>	<b>127.0</b>	<b>2.5</b>	<b>144</b>	<b>72</b>
<b>SWT</b>	<b>6.6250</b>	<b>168.2</b>	<b>6.0000</b>	<b>152.4</b>	<b>2.5</b>	<b>201</b>	<b>90</b>

*\* Material: 4130 / 1026*